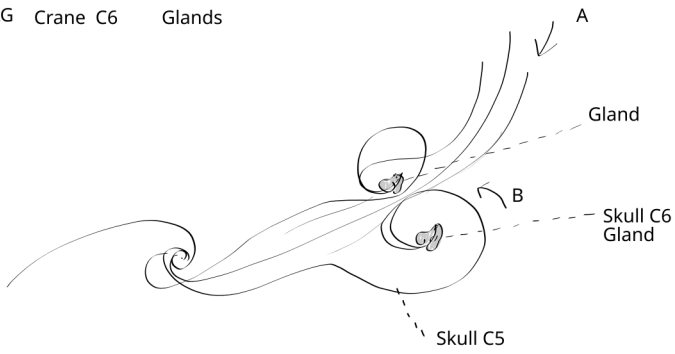


djeleas

EN

CONTENT

- | | | |
|-----------|-----------|----|
| - LG | following | p2 |
| - AE , LS | following | p3 |

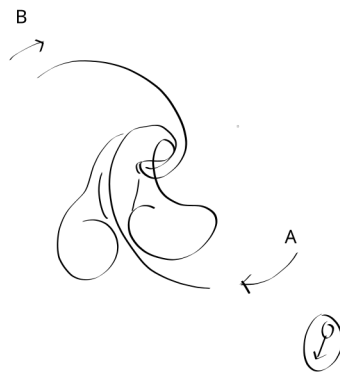


A: Ext. Edge of Skull C1 , A
 B: Ext. Edge of Big Whirl of Skull C5 (Jaw)
 SS: at the Exit of SUP., these are glands which are forming .

“ the whirl’s eye ”

$$\text{Glands} = (\text{Skull C5 , BW , EE}) \times (\text{Skull C5 , A , EE})$$

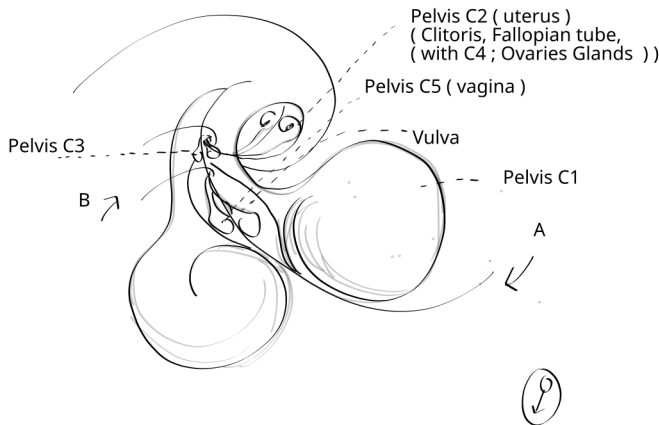
E.G. ; From there comes the mucus (& Saliva) which are the white blood cells which have run through the body (Orgonoma) and therefore the Skull , By the general A of the Orgonome having been on its External Edge. Accumulated in the Glands with the flow of the Big Whirl of the jaw in External Edge .
 (it, which comes from A , External Edge , coupled with B of C5 .
 (= to Spit)



Base of Flame
 Pelvis Core 1 ,
 (bottom of the Vagina) ,
 (front side)

A: Comes from the clitoris
 B: Ext.
 SS: pleasure
 GT: the top of the “ lips ”

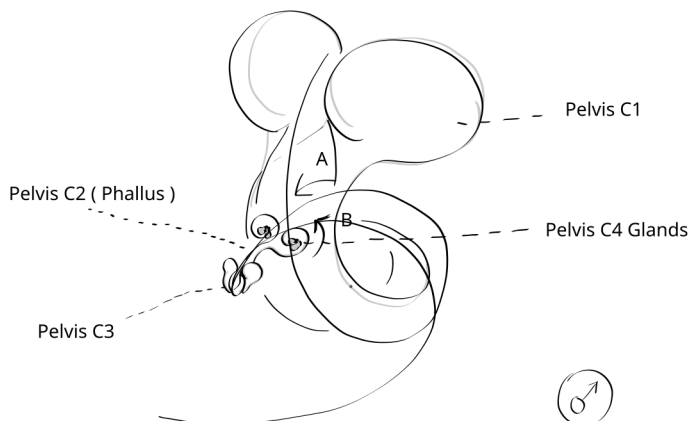
Pelvis C3 Vagina is at the end of C2 Vagina, the SS of Pelvis C1



in the Flame
 Pelvis Core 1

A : the same as A of Pelvis C1
 B : Exterior
 Passes above
 Pelvis C3 Vagina
 (Between his BW)
 BW : the top of the lips
 Base : between Pelvis C3 , BW

Pelvis C5 Vagina is the N of Pelvis C1



A: Ext. Edge of Pelvis , A
 B: Ext. Edge of BW of Pelvis C2 of ♂
 SS: Glands

E.G. ; From there comes the Sperm which is the white blood cells that have run through the orgonome body by the A general of the Orgonome having been in its External Edge , accumulated themselves in the glands with the flow of the Big Whirl , of the phallus External Edge (it, which comes from A , External Edge coupled with B of Pelvis C2 (phallus)
 (= ejaculation)

LG LS Chest following edit repeat

inspire / expire
=
expanspire / tenderspire

(Respire (breathe) ; thing - Spire)
(inspire (breathe in , inhale) ; inward , inside)
(expire (breathe out , exhale) ; outward , outside (FR.))

(Trahere ; to draw , to pull) , tender , ... (LAT.)

i.e. :

“ inspire ” Replace by “ expire ”
(“ expire takes here the value “ expanding ”)

&

“ expire ” Replace by “ TrahoSpire ”
or “ inTenderSpire ” or “ Tenspire ”
(“ TrahoSpire ” ou “ Tenspire ” takes the value
of “ Tension ” (internal tension , just like the
Word “ inspire ” (Spire keeps the value of the sulfle
but the value ~ “ Spiral ” or “ spirit ” is more
important by taking external reality))

expanSpire (breathe expand , expandhale) / Tenderspire (breathe intratender , intratenderhale) are the two movements of breathing.

LG LS Chest following edit

Solar Plexus (EN.)

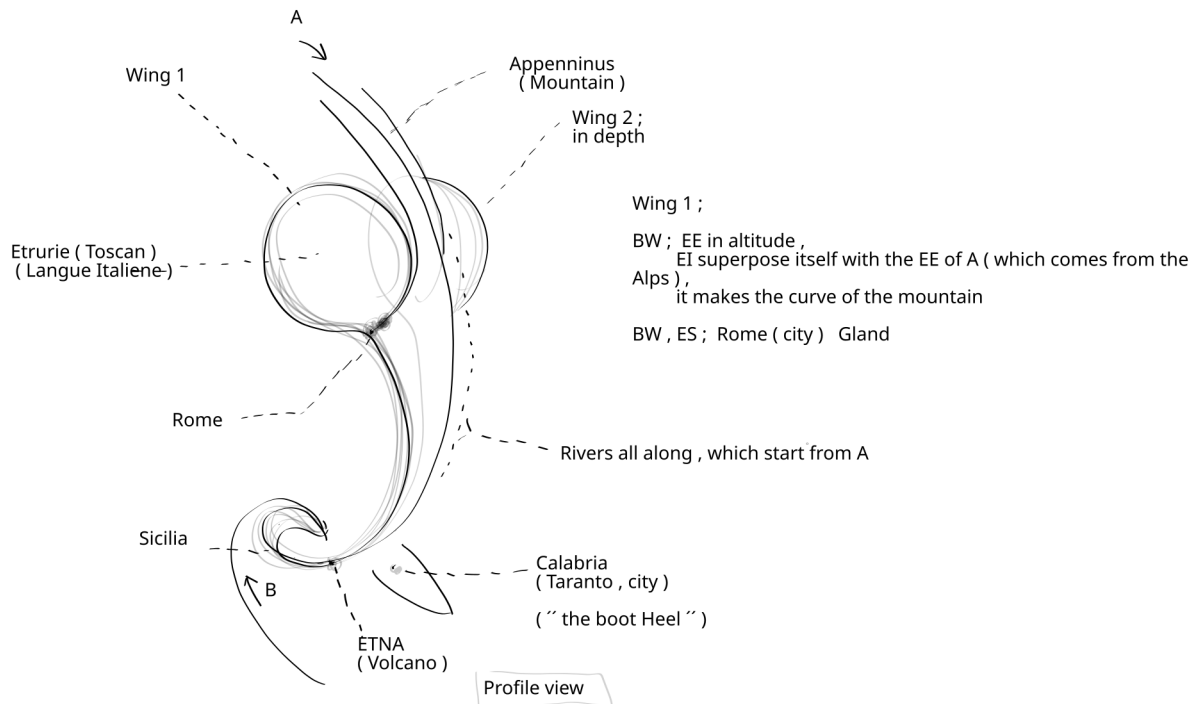
Replaced by

Plessus Solare (IT. , LAT.)

LG LS Chest following edit Ravage language

Sofrology ;
for talking about the Sulfle , tout en incluant le sens de Soufrance
(connoté par assonance) .
while it is exactly the inverse .

AE Earth Anamole Core Italie following
continent form (AT (C2 , A2 , BE) X (C3 , A2 , GT , BE))



Appenninus etymology

(appendere ; to Hang , to Suspend , ... (LAT.))
(appensos ; passage , ... (LAT.))

“ Suspend to Europe ” (EA,C2,W2,EE)

edit next day:

(cis ; below , ... (LAT.))
Galia Cisalpina

If it is compared to one Leg , then it is in the inverse direction ; the heel is
of the other side , (the back of the ankle) Sicily . And the foot comes after
the Exit of Sup. of the Etna , at right (where we think we see a heel)
Et Rome est juste en bas du Molet , (un peu á l’interieur) .

“ All roads lead to Rome ? ”

No , but still almost all , there remains the continuation of the ES ;
Calabria , if in Italy we want to go elsewhere .

LS Ravage language

Regarder (FR.)

“ they Regardent ” Re - guard , thing - guard , thing keep . .
they Regardent at the street , the nature , one thing ; stand guard on them/monitor/control ,
watches it .

(Vedere ; to see , ... (LAT. , IT))

☞ “ as in a body ,
When it cannot pass , it warm .
I really think that there is something between Tianshan Mountain and Verkhoyansk mountain . ”
Mail to WMR ~ 02.12.23

Orgonome ;
it is the same for the feeding , indeed , full belly ; Hot Flame , up to the Crane C1 .
(and also Completely Imobile Orgonom . (until it goes/pass again (intendere up to ES)))

food in Base of C general If not passed , it warm/heats up.

EG; where it is cold, the orgonomes eat more to heat themselves , are therefore larger and slower , as in swamp .
where it is hot , the orgonomes avoid of heat/warm more , and therefore of eating , they are thinner.

Anti-E.G. ; Stay the wolves, for example, where it is cold, which are thin/lean (but eat a lot). and elephants for
example where it is hot , which are big (and herbivores